

SCIENCE. SERVICE. SOLUTIONS.



Wall System Warranties



Where Product Quality Meets Financial Security

Carlisle Coatings & Waterproofing Incorporated (CCW) has built its reputation by not only offering products that provide outstanding value and performance but also providing industry-leading warranty coverage. As part

of the Carlisle Construction Materials division of Carlisle Companies (NYSE: CSL), CCW is able to offer warranties backed by a large warranty reserve fund, ensuring that your project is securely covered.

A Single-Source Solution

CCW provides single-source warranty coverage, ensuring product quality while supporting your project from start to finish, and through the warranty term:

- CCW-manufactured wall system and sealant components
- Consistent product quality & compatibility
- Technical support for all CCW wall system components
- Simple resolution of any construction issues that may arise
- Comprehensive warranty coverage for wall system components

The Ultimate Protection Against the Elements

CCW Wall Systems combine the thermal efficiency of CCW's R2+[®] continuous wall insulation with the moisture resistance and energy efficiency of CCW's weather-resistive air and vapor barriers. This combination protects the interior building from moisture and water infiltration while creating a total building envelope that maximizes energy efficiency and reduces long-term operating costs.

With CCW's Fire Resist line of air and vapor barriers, CCW Wall Systems also provide extensive fire resistance and are rated for NFPA 285 compliance, providing supreme protection from all the elements. CCW offers more than 80 assemblies that are NFPA 285 compliant.

Long-Term Efficiency

CCW's R2+ insulation has the highest R-value per inch of any insulation on the market, providing superior dimensional stability, compressive strength and thermal resistance.

Because of the superior energy performance of its wall systems, CCW offers a variety of warranty options that cover thermal efficiency, moisture management and dimensional stability for up to 20 years.

CCW R2+ wall system warranties vary depending on the assembly you choose, with coverage including:

- R-value thermal resistance of R2+ insulation (insulation will maintain at least 80% of its originally published R-value)
- Water and air barrier performance of CCW membrane.
- CCW flashings used to seal joints openings, penetrations and terminations

No matter which wall system you choose, you can rest assured your wall system will perform for a long time to come.

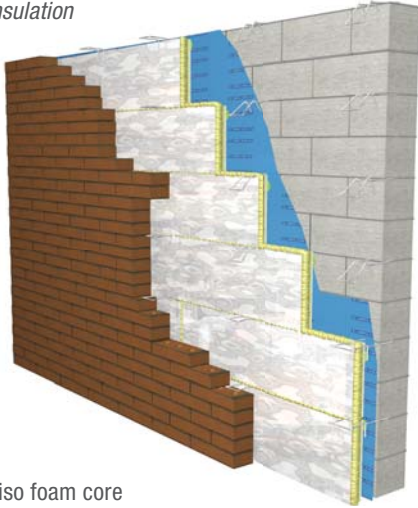


A Solution for Every Project

With an extensive line of air and vapor barriers, and four wall insulation options, CCW has a wall system option that can meet your project-specific needs.

R2+ Silver

Foil-Faced Polyiso Insulation

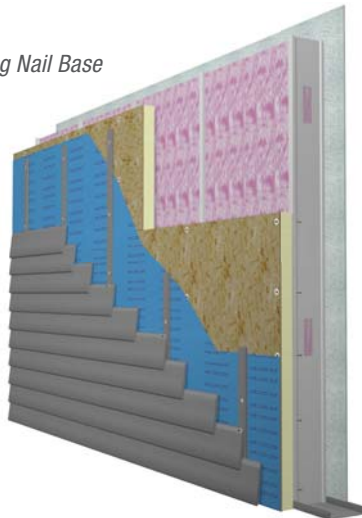


- Closed-cell polyiso foam core with tri-laminate foil facers on both sides
- Continuous insulation suitable for many wall assemblies
- R-values of 6.7 – 24.6*
- Suitable for masonry cavity wall applications

Note: R2+ Silver is not suitable for exposed interior applications.

R2+ Base

Commercial Grade Insulating Nail Base



- Closed-cell polyiso foam core with coated glass facers, laminated to fire-treated plywood
- Optimal substrate for mechanically attaching cladding materials
- Insulating nail base, suitable for many commercial wall assemblies
- R-values of 6.6 – 19.1*
- FSC Certified wood available

Note: R2+ BASE is not suitable for exposed interior applications.

R2+ Matte

Coated-Glass-Faced Polyiso Insulation



- Closed-cell polyiso foam core with coated glass facers on both sides
- Continuous insulation suitable for many commercial wall assemblies
- R-values of 6.0 – 21.7*
- Suitable for use behind aluminum composite and many other rain screen cladding systems

Note: R2+ Matte is not suitable for exposed interior applications.

R2+ Sheathe

Foil-Faced Polyiso Insulating Sheathing



- Enhanced fire-resist, closed-cell polyiso foam core with embossed aluminum facers, one side silver, one side white
- Continuous insulated sheathing, suitable for many commercial wall assemblies
- Provides an air barrier and water resistant barrier with secure fastening, taping of joints and flashing of details
- Can be installed directly on steel studs in a variety of wall assemblies without the need for exterior gypsum sheathing
- R-values of 6.3 – 19.5*
- UL Classified

Note: R2+ Sheathe is not suitable for exposed interior applications.

Carlisle Coatings & Waterproofing

900 Hensley Lane | Wylie, TX 75098 | 800.527.7092 | www.carlisleccw.com

